



CCNetServer device management

Author: MYLAPS

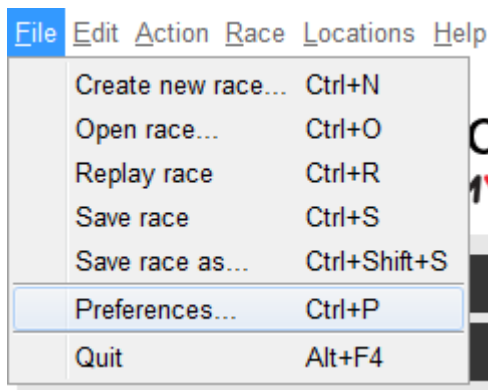
Date: 23 September, 2015

Version: 3.0

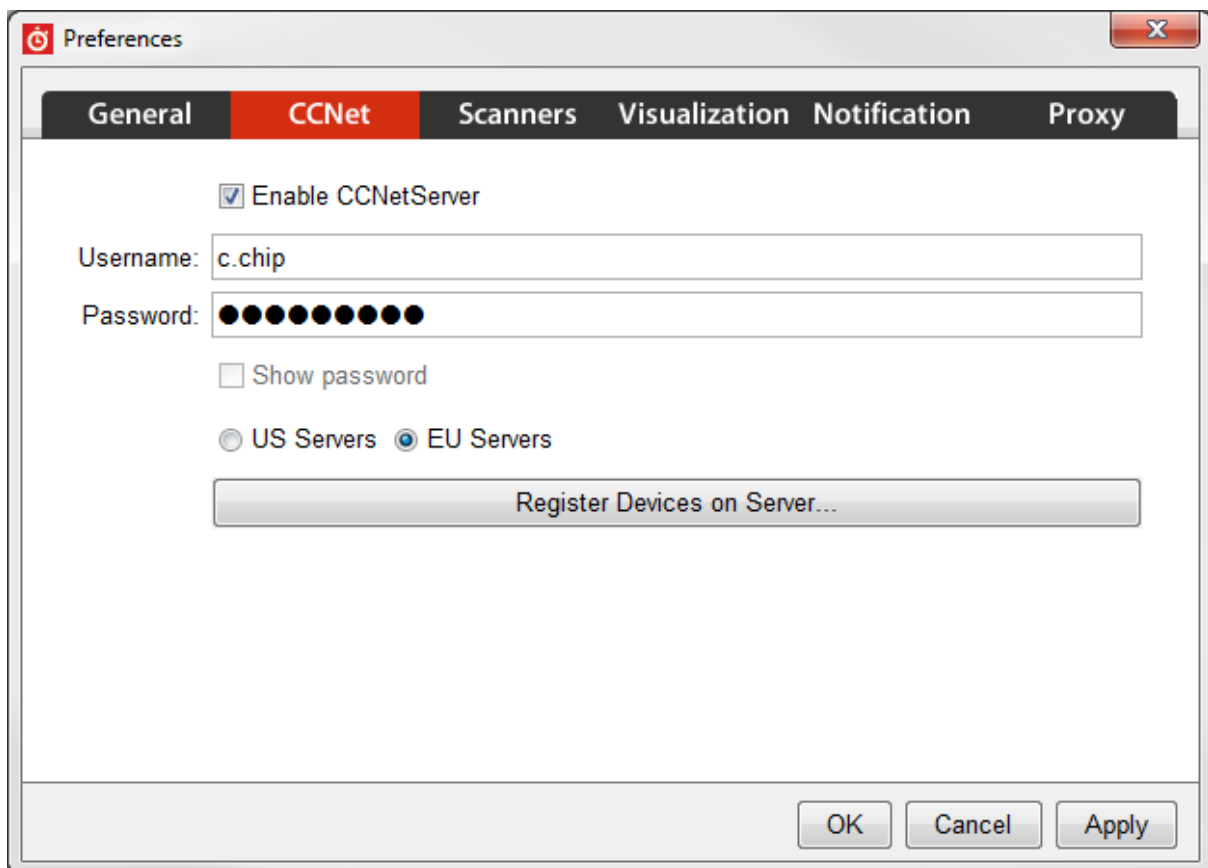
Registration of a device to the CCNetServer by using Timing & Scoring..

You can use Timing & Scoring to register devices to the CCNetServer. To be able to register devices on the CCNetServer you need a CCNetServer account which you can obtain by your account manager.

In Timing & Scoring it is easy to get an overview of all the devices that are registered to the CCNetServer in your account. In the menu bar you click on “File” → Preferences



In the preferences screen you open the “CCNet” tab.

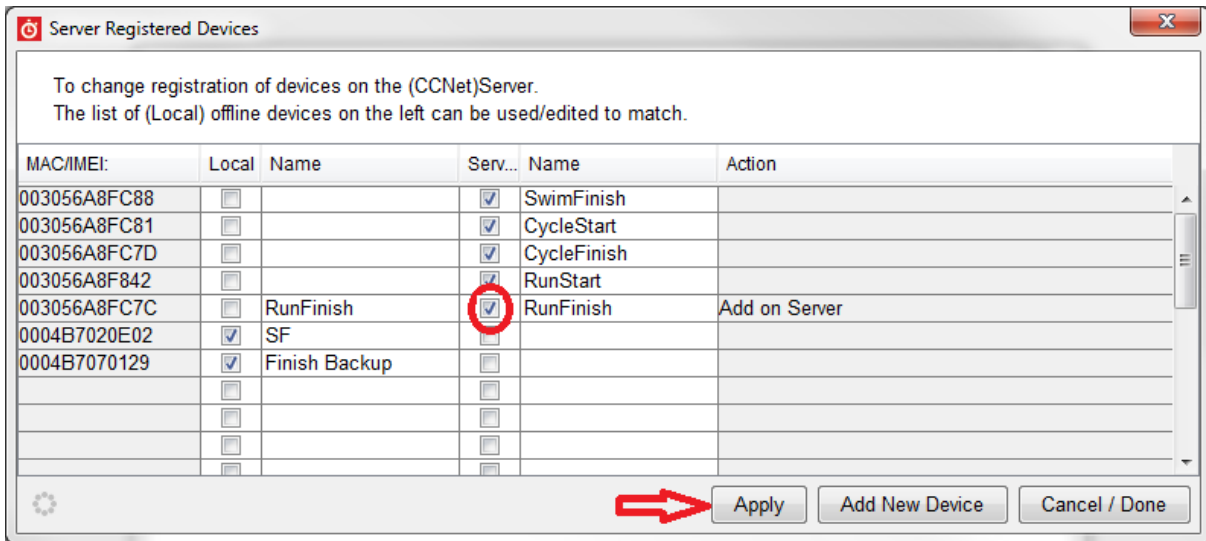


Make sure the “Enable CCNetServer” box is checked.

Select the correct Mylaps CCNetServer by selecting the radio button to US Servers or EU servers.

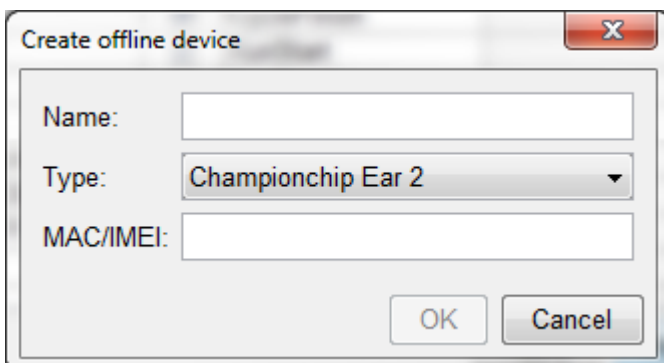
Enter your user name and password and click apply first. (If you don’t have a registration to CCNet server yet, please contact your account manager to get one)

When you press the “Register Devices on Server” button you will get an overview of all devices registered to the CCNetServer under your account and to you local computer (Offline Devices);



The left column shows devices that have ever been connected to your computer (Offline Devices) the column on the right shows all the devices registered on the CCNetServer. To add a device to the CCNetServer you check the box in the “Server” column on the line of the Device’s MAC address. To de-register a device you can uncheck the box in the server column.

When the device you want to register has never been connected to your computer you can add the device as an new device. Click on “Add New Device”.



Fill in the name of the device, select the correct device type, enter the MAC Address and click “OK”. The device will now show in the Offline devices and you are able to register the device to the CCNetServer according the steps described before.

Removing of a device to the CCNetServer by using Timing & Scoring.

Open the CCNet overview (file -> preferences -> CCNet) and click on the “Register Devices on Server” button.

Uncheck the box in front of the device you want to remove from the server and click “Apply”

